



SCHOOLS AND CHILD CARE GUIDANCE

DOH and DCYF Webinar | March 8, 2022

Timeline

2/17/22 Governor announces plans for rescinding the mask mandate in March

Week of 3/7/22
Updated DOH guidance released

3/12/22 Mask requirement rescinds, and new guidance goes into effect

Ahead of new guidance posting:

- DOH Subject Matter Experts in outbreak response, testing, clinical, and environmental will draft changes to the guidance
- Targeted workgroups in local health and the education sector will be consulted

Ahead of new guidance going into effect:

- Webinars planned for K-12 and Child Care sectors
- School and Child Care Community of Practice meetings with local health
- School Nurse webinar
- Local Public Health calls
- Additional communications

Summary of Changes

- Indoor mask requirement will be lifted effective 3/12
- Fewer requirements; most prior requirements are now advisory, recognizing where we are and as we move into the next phase of the pandemic
- Focus on keeping kids in school/care while preventing severe disease
- Encourage individuals and families to protect themselves through existing tools including vaccination, masks, testing
- LHJs, schools, and/or districts or programs may require masks, screening tests, ventilation, or other measures
- K-12 Schools Requirements, K-12 Supplemental Considerations, and Child Care, Youth Development, and Day Camps merge into one document

Requirements and Guidance to Mitigate COVID-19 Transmission in K-12 Schools, Child Care, Early Learning, Youth Development, and Day Camp Programs

Summary of March 7, 2022 Changes – Effective March 12, 2022

- As Washington K-12 instruction enters the final months of the 2021-2022 academic year, this document outlines the remaining requirements for K-12 schools, child care, early learning, youth development, and day camp programs, along with options to consider when building a framework for controlling COVID-19 and minimizing the risk of exposure in educational and child care settings.
 - [Section 1](#) outlines **required** measures.
 - [Section 2](#) and [Section 3](#) include additional options and considerations for schools and providers. These are not requirements.
 - [Section 4](#) and the [Appendix](#) include additional resources and information.
- The previous K-12 Requirements for the 2021-2022 School Year and K-12 Supplemental Considerations have been merged into one document and streamlined.
- Previous recommendations for child care, early learning, youth development, and day camp programs have been included in this comprehensive and aligned document.

For the purposes of this document:

- **Schools** refers to public and/or private schools serving kindergarten through 12th grade (K-12).
- **Providers** refers to child care, early learning, youth development, and day camp programs. For a list of programs included in this group, see the [glossary](#).

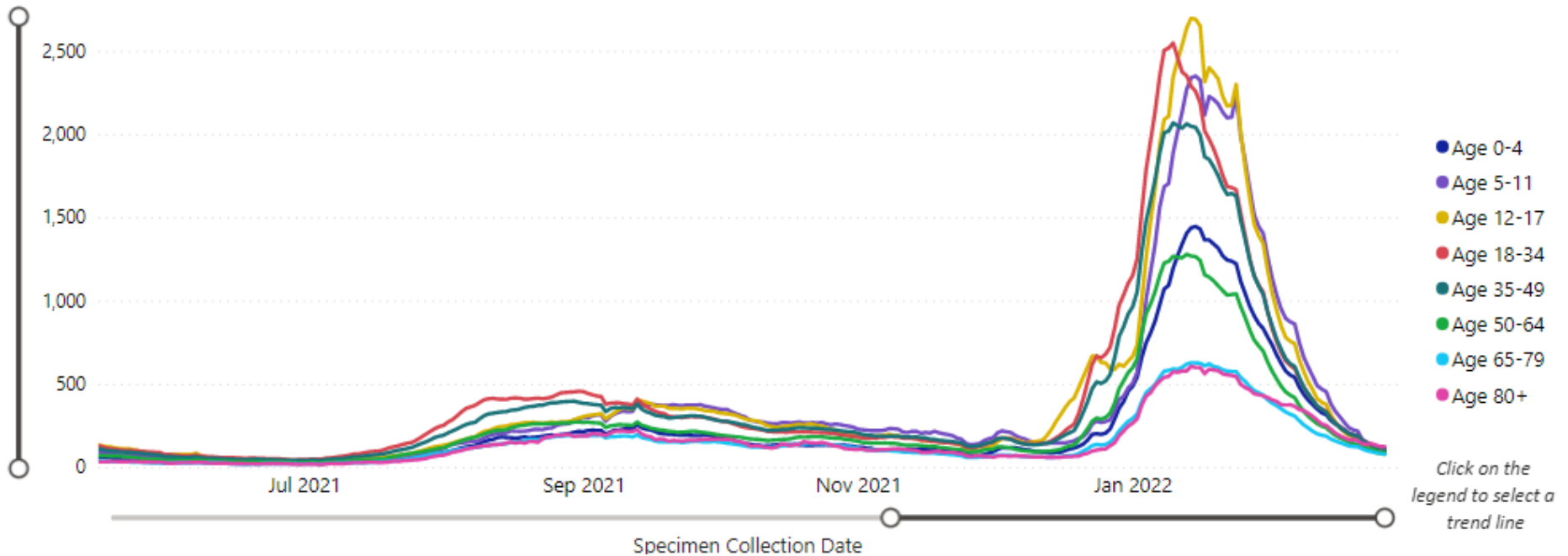
Contents

Summary of March 7, 2022 Changes – Effective March 12, 2022.....	1
Section 1: Requirements.....	2
Employee COVID-19 Vaccination	2
Exclusion of Individuals with Symptoms of COVID-19.....	3
At-Home Isolation Protocol and Returning to School, Care, or a Program.....	3
Isolation of COVID-19 Cases within a Facility	3
Notifying Groups or Individuals of Potential Exposure	4
Ensure Access to Diagnostic Testing for COVID-19	5

<https://doh.wa.gov/sites/default/files/2022-03/821-165-K12SchoolsChildCare.pdf>

COVID-19 Case Rates by Age Group - Washington

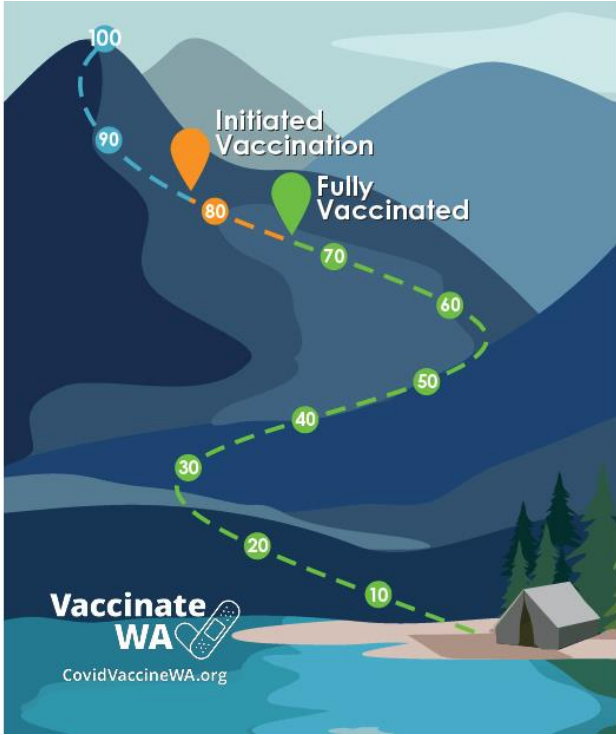
TREND IN 7-DAY RATE OF NEW COVID-19 CASES PER 100K POPULATION BY AGE GROUP



<https://doh.wa.gov/emergencies/covid-19/data-dashboard> (3/8/2022)

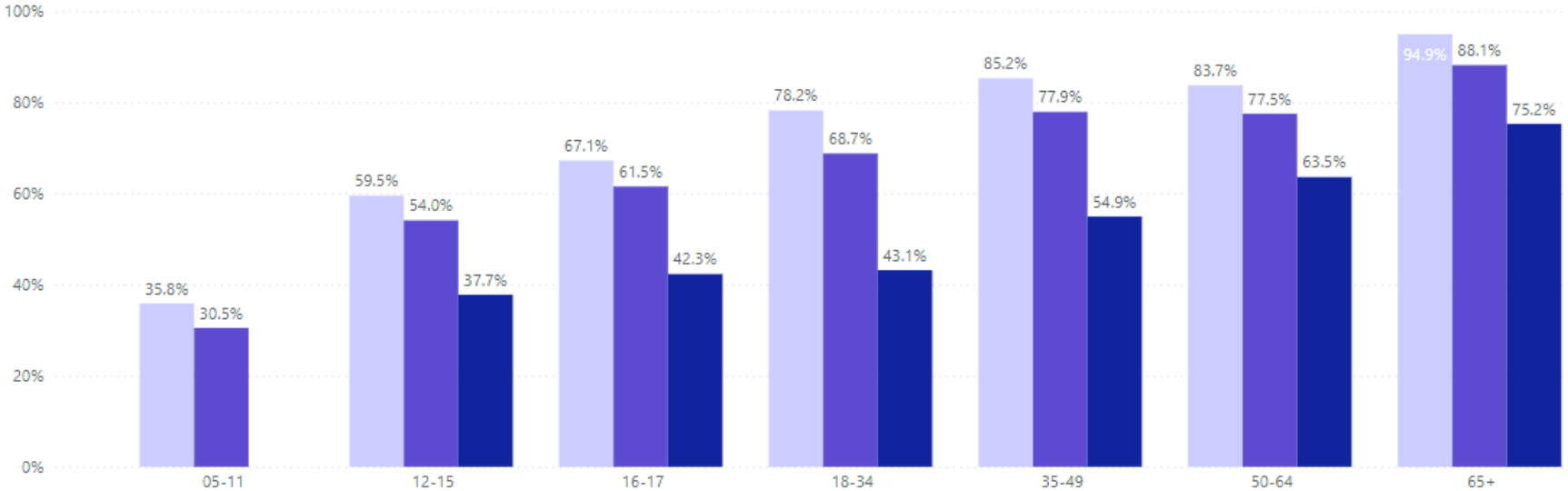
As of March 7,
81.0%*
 of the population
 5 and up has
received at least one dose
 and
73.4%*
 is **fully vaccinated.**

*This percent includes aggregate data from the Department of Defense and Department of Veterans Affairs and is higher than the DOH data dashboard.



PERCENT VACCINATED, WITHIN AGE GROUP

■ Percent Initiating Vaccination ■ Percent Fully Vaccinated ■ Percent of Eligible People Who Received a Booster



At-a-Glance



REQUIREMENTS

- Employee vaccination
- Exclusion of people with symptoms
- Isolation of people with COVID
- Notifying groups or individuals of potential exposures
- Access to diagnostic testing
- Reporting of cases, outbreaks
- Responding to outbreaks

**Masks required in limited settings and situations*



OPTIONS

- Promoting vaccines and boosters
- Masks*
- Ventilation
- Distancing
- Screening tests, Test to Stay
- Hand hygiene and respiratory etiquette
- Cleaning

When and Where are Masks Required

ALWAYS

- Nurse/Health room
- Isolation room
- Days 6-10 of isolation, unless the person has tested negative

MAY BE

- During an outbreak or high level of disease
- During higher risk activities
- As part individual staff or child/student accommodation (case by case)

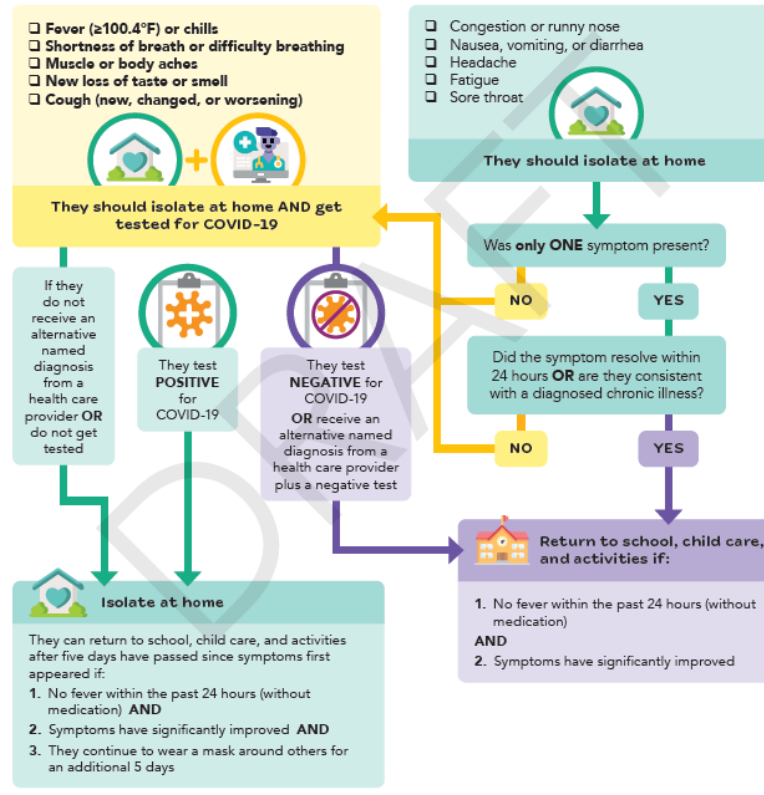
Return after Symptom Exclusion

What to do if a Person is Symptomatic



These recommendations are for K-12 schools, child care, and connected extra-curricular activities.

If a person has one or more of these symptoms:



Return from Isolation - People with COVID-19

Every person with COVID-19 **must isolate** at home for at least 5 days. A person may return after 5 days if:

- Their symptoms have improved or they are asymptomatic, AND
- They are without a fever for the past 24 hours without use of fever-reducing medications.

If returning to school/care after day 5, the individual:

- Is **strongly recommended** to wear a well-fitted mask or face shield with a drape during days 6-10 of their isolation period, OR
- Test negative with an antigen or at-home test any day after day 5. Testing beyond day 10 is not necessary.

If the individual is not able to wear a well-fitted mask or face shield with a drape, AND does not test negative, they should continue isolating through day 10.

Exposure Notices

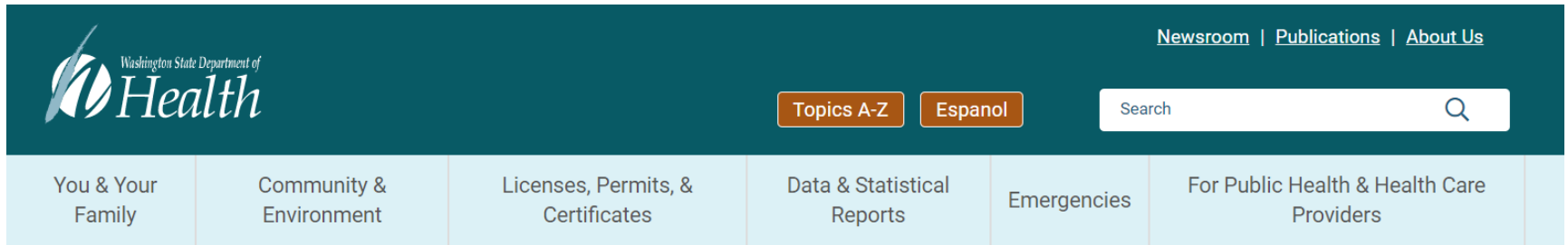
Active notice of potential exposure to employees and children who are immunocompromised, medically fragile, or otherwise at risk for severe disease.

System for informing broader school/care community of cases and outbreaks:

- Newsletter
- Dashboard
- Group notices

Access to testing for individuals who may be exposed

Testing as an Optional Resource

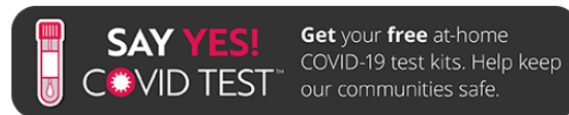


Home > Emergencies > COVID 19 > Testing For COVID 19

Testing for COVID-19

English ▾

Testing for COVID-19
Statewide Testing Strategy
Tested Positive for COVID-19
Testing Locations
Testing for COVID-19 Frequently Asked Questions



Frequently Asked Questions

Find a testing location near me

Easily report your positive at-home test results

People who purchase over-the-counter test kits and receive a positive result should call the state COVID-19 hotline, 1-800-525-0127 then press # (press 7 for Spanish), as soon as they receive results. The hotline is available Monday from 6 a.m. to 10 p.m., and Tuesday to Sunday (and observed holidays) 6 a.m. to 6 p.m. Language assistance is available.

<https://doh.wa.gov/emergencies/covid-19/testing-covid-19>

Gratitude and Follow Up

COVIDexternalaffairs@doh.wa.gov





To request this document in another format, call 1-800-525-0127. Deaf or hard of hearing customers, please call 711 (Washington Relay) or email civil.rights@doh.wa.gov.