

# Updating DEL's Rules & Regulations

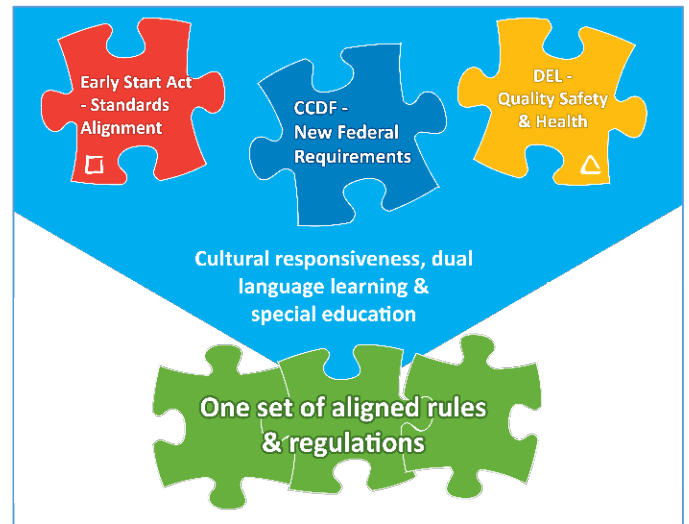
*More than just aligning standards*

The Early Start Act mandated that DEL update our WAC so that the early learning system has a unified set of regulations that are easy to understand by providers in the field.

- First we have to align our Family Home and Center WACs, eliminating unnecessary differences and consolidating two separate WAC sections into one.
- We then have to create a progression of standards and regulations between licensed childcare, Early Achievers, and ECEAP, with health and safety requirements in the WAC replacing different standards in the ECEAP WAC.

With the reauthorization of the Child Care and Development Fund, new regulations are required by our federal funders.

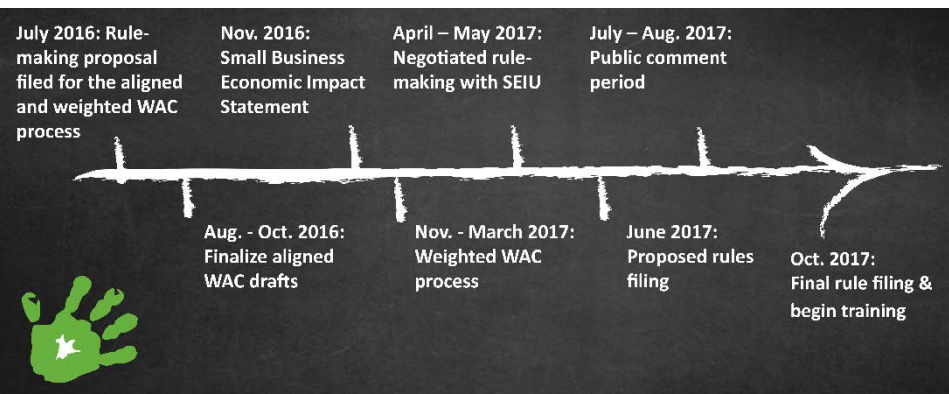
DEL believes that the safety of children is paramount, so we've enhanced our environmental safety and child health quality requirements.



To better serve all Washington children, we incorporated a clear cultural relevancy lens, addressed specifically the dual-language learners who are an increasing part of our population, and increased special education inclusion.

As an agency we're adding another step to this project that will "weight" the different regulations. We'll be clear to providers about the relative risk for children associated with each WAC regulation and the consequent severity of response from us.

## New Timeline for Updating DEL WACs



*Getting this process right takes time and lots of input from the community. After the final rule filing, we'll embark on a robust education and training effort for the field before we begin enforcement.*



Washington State Department of  
**Early Learning**