

# Caregiver Supports Project

Project Update Presentation

August 31, 2023

[www.dcyf.wa.gov](http://www.dcyf.wa.gov)



Washington State Department of  
**CHILDREN, YOUTH & FAMILIES**

# Welcome

- **Caregiver Supports Project:** Implement a continuum of placement resources that enable safe, stable, and supported placements for children and youth in foster care.
- Part of the [Thriving Families campaign](#).
- Today's presentation:
  - Caregiver Support Level Rates for Licensed Caregivers
  - Caregiver Support Level Determination Process
  - Phase 2 Update
  - Proposed Catchment Areas for Caregiver Support Contract



# Phase 1 – Caregiver Support Level Payments for Licensed Caregivers

Implementation January 1, 2024

	LEVEL 1	LEVEL 2	LEVEL 3	LEVEL 4	LEVEL 5	LEVEL 6	LEVEL 7
New Support Levels	Basic Maintenance Foster Care	Support Needs: Adolescent Low Needs	Support Needs: Chronic Physical Health	Support Needs: Developmental Disability	Support Needs: Developmental Disability & Chronic Physical Health	Support Needs: Moderate Mental Health	Support Needs: Complex Mental Health
Rates for Caregiver Support Levels Based on Age – <i>Levels 2-7 rates include Basic</i>							
Age: 0-5	\$722	N/A	\$1,407	\$1,749.50	\$2,092	\$2,434.50	\$2,777
Age: 6-11	\$846	N/A	\$1,531	\$1,873.50	\$2,216	\$2,558.50	\$2,901
Age: 12+	\$860	\$1,202.50	\$1,545	\$1,887.50	\$2,230	\$2,572.50	\$2,915

## Level Determination Changes

- In the current rate assessment process, caregivers report time spent caring for a kid within 30 days of placement. The current process will stop January 1, 2024.
- Starting January 1, 2024 DCYF staff will use a different process using a new, objective tool to determine the caregiver support level for each child. The tool helps staff identify needs and characteristics of the child.
- All kids will go through the new level determination process, not just those with licensed caregivers.

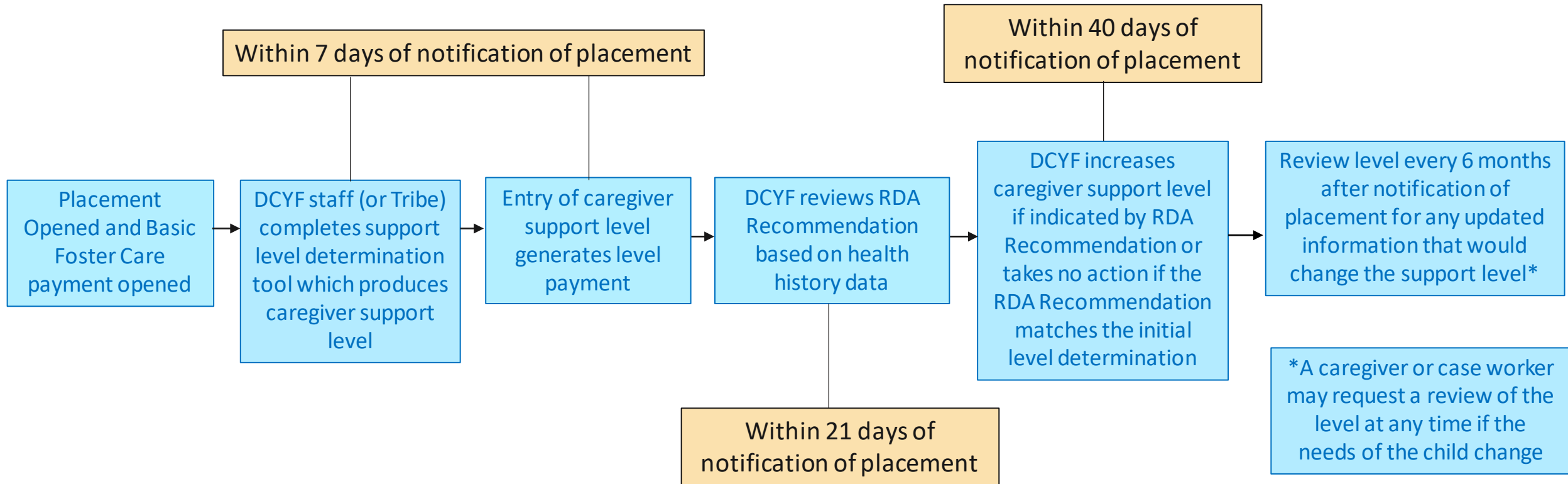
# Caregiver Support Level Determination Process

- DCYF staff will use a new tool to help identify the support needs of children and youth.
  - The tool collects information from multiple sources such as the youth, parents, other important people in the life of the youth, information available in FamLink or completed screenings, etc.
  - Tribes may opt to use the tool to determine the caregiver support level for their kids instead of DCYF staff.
- In addition to the tool, DCYF will also review health history data for the child to make sure all known needs are part of the level decision.
- The Caregiver Support Level informs the caregiver support level payment for licensed caregivers.
- Caregiver Supports Contract holders will receive the caregiver support level that has been determined by DCYF.
  - Each level is associated with a defined level of service in the statement of work.

Link to RDA research: <https://www.dshs.wa.gov/ffa/rda/research-reports/informing-placement-continuum-classifying-children-out-home-placement-using-integrated-administrative-data>



# Caregiver Support Level Determination Process & Timeline



RDA = DSHS Research and Data Analysis team

# Phase 2 – Caregiver Supports Contract

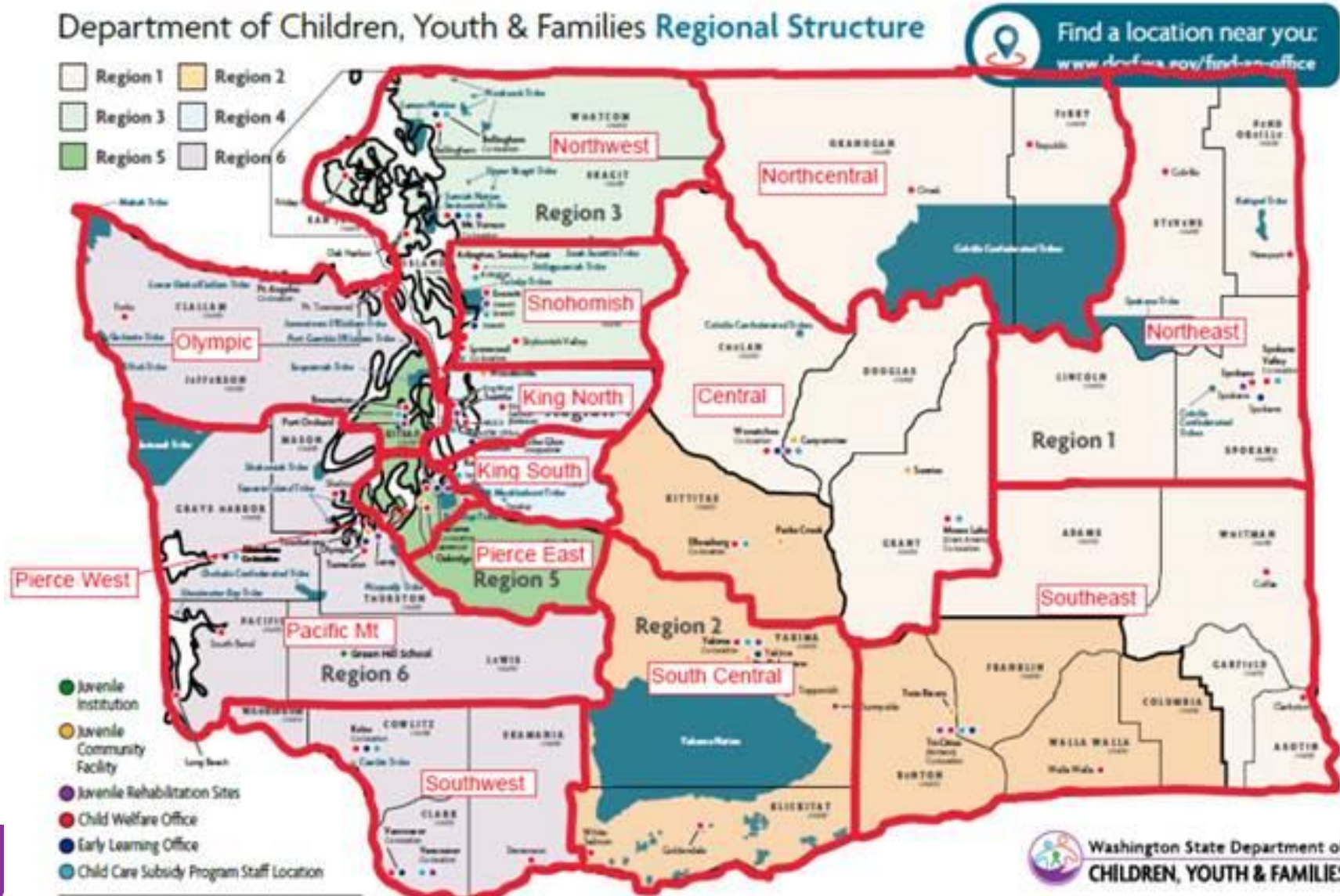
Phased Implementation 2024-2026

- The Caregiver Supports Contract includes Placement Supports and Case Aides
  - The Leg funded Case Aides for levels 3-7
  - Support areas include accessing resources such as education advocacy, health and well-being coordination, finding local child care, culturally and developmentally appropriate care, transition to adulthood, and crisis supports.
- The Caregiver Supports Contract will be awarded by catchment area
- DCYF is working on a plan to roll out the Caregiver Supports Contracts in phases starting in Spring of 2024, the placements will not roll out all at once statewide
- Procurement for the new contracts is anticipated to being in late 2023 or early 2024





# Proposed Catchment Areas



DCYF does not discriminate and provides equal access to its programs and services for all persons without regard to race, color, gender, religion, creed, marital status, national origin, sexual orientation, age, veteran's status, or presence of any physical, sensory, or mental disability. If you would like free copies of this publication in an alternative format or language, please contact DCYF Constituent Relations at 1-800-723-4833 or email [communications@dcyf.wa.gov](mailto:communications@dcyf.wa.gov).

DCYF PUBLICATION COMM\_0008 (02-2023)



# Upcoming Communications

- Pre-recorded project update webinars will be posted on the Caregiver Supports Project website on the last Thursday of each month
  - September 28<sup>th</sup>
    - Topics TBD
  - October 26<sup>th</sup>
    - Topics TBD
  - November 30<sup>th</sup>
    - Topics TBD
  - December 28<sup>th</sup>
    - Topics TBD



# Thank you!

Please send all questions and comments to: [DCYF.CaregiverSupports@dcyf.wa.gov](mailto:DCYF.CaregiverSupports@dcyf.wa.gov)

