

# Keeping Families Together Act

Quarterly Data Update

April 2024

[www.dcyf.wa.gov](http://www.dcyf.wa.gov)



Washington State Department of  
**CHILDREN, YOUTH & FAMILIES**

# What we're seeing:

- The law is meeting the intended impact of reducing removals
- We are not removing many children at high risk, and those children are with their families and communities.
- Internal reviews of Safe Child Consultations indicate that we are taking additional steps to prevent removal of a child and to support a safety plan for the family
- The overlap between 1227 and Plan of Safe Care is reducing screened in intakes involving substance-exposed newborns
- Fentanyl crisis leaves many children at risk
- A lack of SUD treatment services and other community-based supports for families places children at further risk



# Long-term trends:

- Since state fiscal year 2018, Washington has seen a 35.6% decrease in the number of children in out of home care (point in time.) This trend is largely consistent with the national trends on children in out of home care.
- Since 2020, DCYF has seen an increasing percentage of moderately high to high-risk cases being re-referred to CPS intake and screening-in (within 90 days of the completion of the risk assessment.)
- Since 2019, opioid-related emergencies have dramatically increased for the entire population (both adults and children) in Washington.

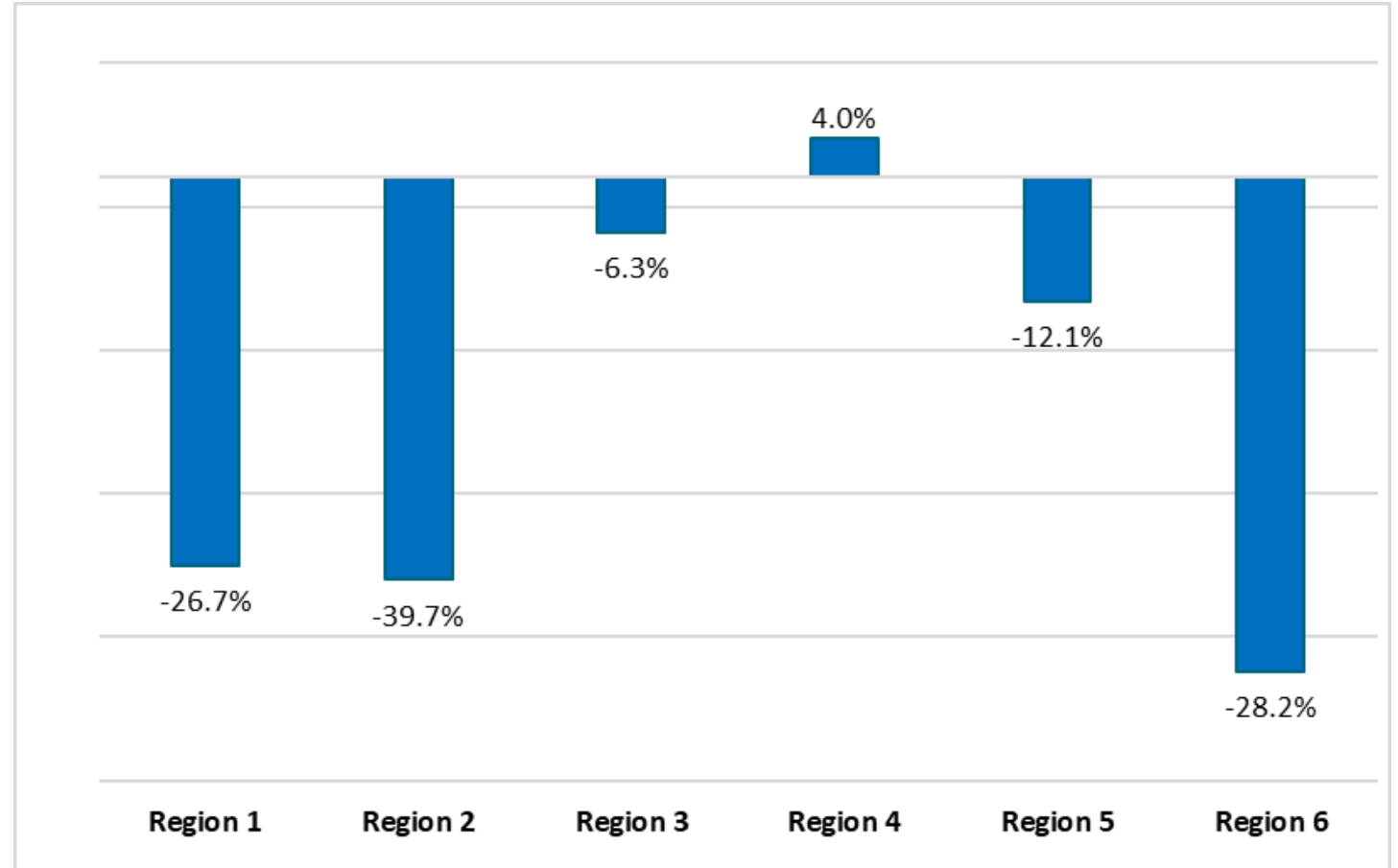
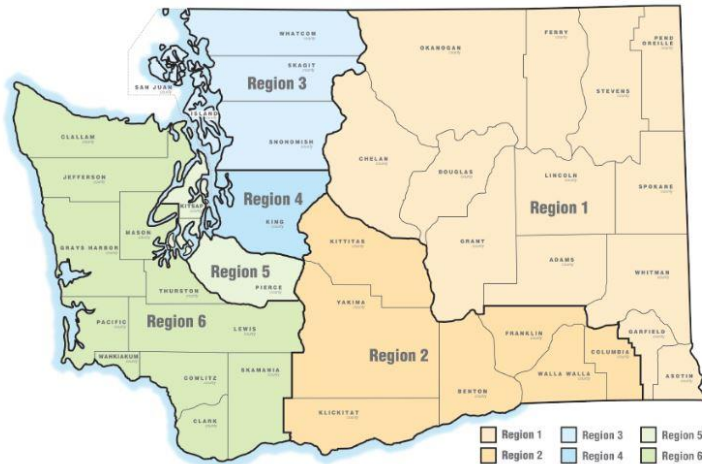


# Entries into care have decreased by 19.3% since the new law went into effect

Total Fewer Children Entering Care by Removal County  
July 1, 2023 – March 31, 2024, compared to July 1, 2022 – March 31, 2023

## Statewide:

- 19.3% reduction in children entering care
- Largest reductions in Clark, Spokane, and Yakima Counties



# Entries into care are down across all categories, while participation in voluntary services is increasing

All entries into care		
	July 1-Mar 31, 2023	July 1-Mar 31, 2024*
<b>Voluntary Placements</b>	409	400
<b>Protective Custodies</b>	1,213	1,106
<b>Court Approved Placements</b>	900	500
Cases Receiving Services		
<b>Family Voluntary Services</b>	1,403	1,572

\*2023/24 data are observed, not adjusted for known data lag, so may increase somewhat as more case data are entered into FamLink  
 \*\* Family Voluntary Services identifies the distinct count of families served by FVS during the time frame identified

# The largest reductions in out of home placements are among infants

Total Fewer Children Entering Care by Age Group July 1 – Mar 31, 2023, compared to July 1 – Mar 31, 2024		
	Number	Percentage
Age 0-1	-225	-26.0%
Age 2-3	-42	-14.4%
Age 4-11	-117	-14.1%
Age 12-17	-130	-24.5%

# Fentanyl-related critical incidents are increasing among children in Washington State

