



# UPDATING DEL'S RULES & REGULATIONS

**The Early Start Act mandated that DEL update our rules** that govern child care licensing, part of the Washington Administrative Code (WAC). The intent was to have an early learning system with a unified set of regulations that are easy to understand by providers in the field.

- First we have to align our Family Home and Center WACs, eliminating unnecessary differences and consolidating two separate WAC chapters into one.
- We then have to create a progression of standards and regulations between licensed child care, Early Achievers, and ECEAP, with health and safety requirements in the WAC replacing similar standards in Early Achievers and ECEAP.

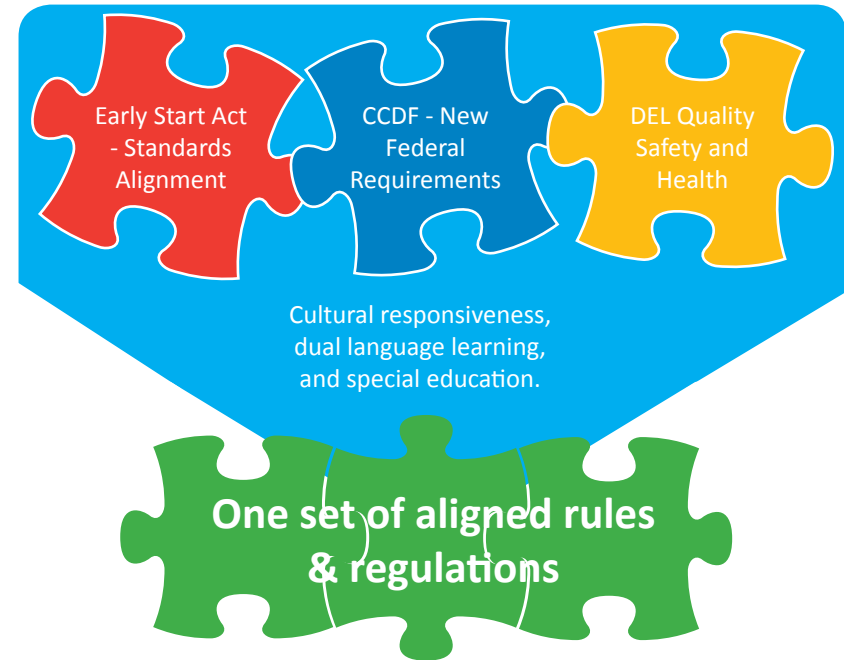
**With the reauthorization** of the Child Care and Development Fund, new regulations are required by our federal funders.

**DEL believes that the safety of children is paramount**, so we've enhanced our environmental safety and child health quality requirements.

*"The Department of Early Learning regulates thousands of small businesses that provide child care to 180,000 children in Washington every year. You hear a lot about 'regulations crushing small businesses' and 'regulations being critical to ensure safety.' Finding a balance between adequate safety and supporting child care providers is critical to get the best outcomes for kids."*

*– DCYF Secretary, Ross Hunter*

*More than just aligning standards.*



**To better serve all Washington children**, we incorporated a clear cultural relevancy lens, addressed specifically the dual-language learners who are an increasing part of our population, and increased special education inclusion.

**As an agency we're adding another step** to this project that will "weight" the different regulations. The weights reflect the level of risk that could result to the child when the rule is not followed. DEL and providers have worked together to assign weights to the rules establishing consistency of licensing compliance oversight.

Learn more about DEL's standards alignment process by visiting: [www.del.wa.gov/government/standards-alignment](http://www.del.wa.gov/government/standards-alignment)

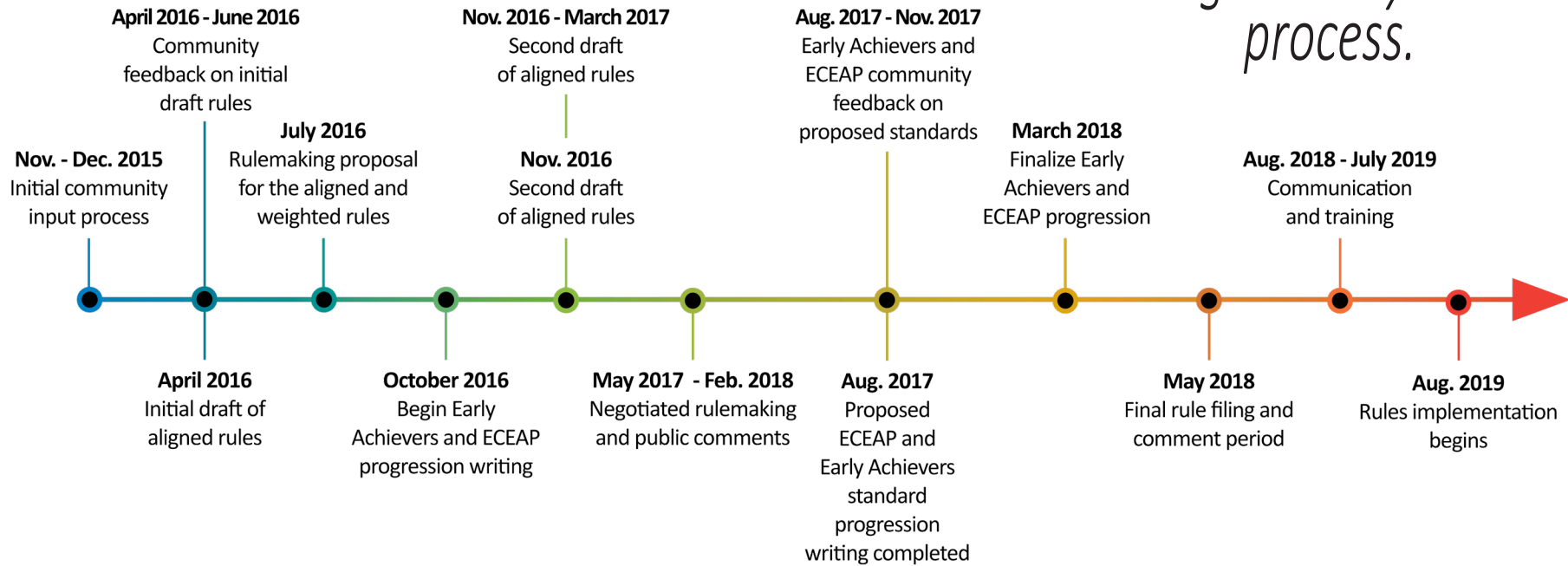


Washington State Department of  
**Early Learning**



# TIMELINE FOR UPDATING DEL RULES & REGULATIONS

*DEL is taking a transparent, methodical, and inclusive approach to this legislatively-mandated process.*



## DEL has made provider and stakeholder feedback and inclusion a cornerstone of this process:

- Nov. and Dec. 2015 – 22 community input meetings across the state, more than 650 participants
- April and May 2016 – 23 state-wide meetings with 467 stakeholders
- Alignment Advisory Committee meetings
- Weighting process: focus groups, community survey
- Negotiated rulemaking: providers, families, stakeholders
- Online survey on the whole process:

<https://www.surveymonkey.com/r/DELRulesFeedback>

*DEL has been flexible in response to feedback from providers and stakeholders. Its not too late to get engaged!*

Visit [www.del.wa.gov/government/standards-alignment](http://www.del.wa.gov/government/standards-alignment) to make sure your comments are heard.



Washington State Department of  
**Early Learning**