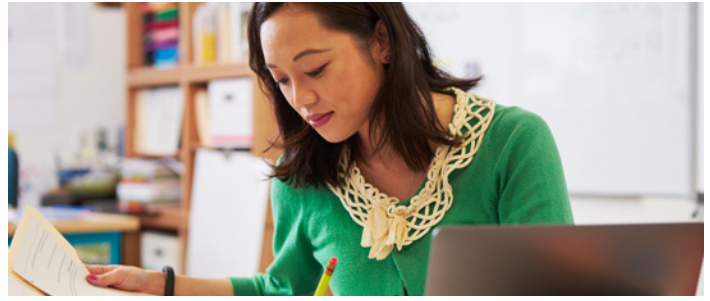


Evaluating Coursework for Staff Qualifications

A guide to assist providers in meeting staff qualifications



About this guide:

This guide is a resource to show example courses that may assist a provider in meeting staff qualifications. Early childhood education courses are considered birth to third grade and the course examples below may match ECE Competency Areas, even when the course title is not specifically early childhood education. For more information on ECE Competency Areas, see our publication, *Washington State Core Competencies for Early Care and Education (EPS_0023)*, available online at www.dcyf.wa.gov/publications-library/EPS_0023. Through the education application process, some college credits earned may be broken down into multiple competency areas to help educators meet as many competency areas as possible, and some classes may only have part of their credits counted depending on the outcomes of the course.

How to use this guide:

Consider the courses you or your staff have, or courses you may want to take if you are working towards meeting staff qualifications. Keep in mind the following criteria as you use this resource:

- A related degree: When someone has a degree with 30 credits in ECE that includes two credits per Core Competency Area.
- Aligned credits: When someone has a collection of college credits that match the core competencies. This person may or may not have a degree.

Questions?

If your degree or coursework is not referenced in the tables below, but may meet an ECE Competency Area, contact merit@dcyf.wa.gov.

COMPETENCY AREA	ECE FOCUS AREAS TOPICS MAY INCLUDE:	COURSEWORK EXAMPLES <i>This list contains common examples, but is not inclusive.</i>
<p>Child Growth and Development</p>	<ul style="list-style-type: none"> • Brain development/cognition • Physical and social characteristics and needs • Developmental behaviors • Introduction to developmental theorists • Curriculum to address development • Behaviors/learning related to unmet needs 	<ul style="list-style-type: none"> • Child Development • Human Development – Lifespan (HD)* • Child Development (ECE, EDUC, EDPSYCH, PSYCH, SPED, HD) • Developmental Psychology (PSYCH)* • Educational Psychology (SPED)* • Exceptional Child • Child Growth and Development • Current Issues in Brain Development

**Indicates that this course aligns with Washington State's Core Competencies for Early Care and Education Professionals, and Washington State's Core Competencies for Child and Youth Development Professionals.*



Washington State Department of
CHILDREN, YOUTH & FAMILIES



COMPETENCY AREA	ECE FOCUS AREAS TOPICS MAY INCLUDE:	COURSEWORK EXAMPLES <i>This list contains common examples, but is not inclusive.</i>
Curriculum and Learning Environment	<ul style="list-style-type: none"> • Developmentally and culturally appropriate curriculum development, implementation, evaluation and assessment • Teaching techniques • Promoting physical development • Promoting cognitive development • Promoting language and communication development • Promoting social/emotional development • Promoting creative expression 	<ul style="list-style-type: none"> • Curriculum for Early Childhood Programs • Curriculum in the Classroom in ECE • Teaching Each Student (SEPD) • Curriculum and Play in the Classroom • Environments for Early Learning • Language and Literacy • Curriculum Development (ECED) • Math in the Early Learning Classroom • ECE Classroom Experience—birth to third grade: <ul style="list-style-type: none"> – Teaching Practicums – Classroom Experience – Supervised Teaching – Service Learning in the Classroom – Direct Teaching
Ongoing Measurement of Child Progress	<ul style="list-style-type: none"> • Observation • Assessment • Planning curriculum is on curriculum competency area 	<ul style="list-style-type: none"> • Observational Study/Methods • Child Assessment and Evaluation (ECE, EDUC, HD prefixes) • Assessment, Evaluation and IEP • Observation/Assessment

**Indicates that this course aligns with Washington State’s Core Competencies for Early Care and Education Professionals, and Washington State’s Core Competencies for Child and Youth Development Professionals.*

COMPETENCY AREA	ECE FOCUS AREAS TOPICS MAY INCLUDE:	COURSEWORK EXAMPLES <i>This list contains common examples, but is not inclusive.</i>
Family and Community Partnerships	<ul style="list-style-type: none"> • Culturally competent and responsive family and community communication and outreach • Healthy parenting • Relationships with families • Use of community resources 	<ul style="list-style-type: none"> • Cultures and Family • Cultural Anthropology • Family Systems: Understanding Family Interactions (HD) • Diversity in Contemporary Families (HD) • Child, Family and Community (EDUC) • Sociology of the Family (SOC)* • Geography of Childhood* • Collaboration: Working with Parents and Professionals (EDSPE) • Diversity in Contemporary Families • Education, Culture and Equity (SPED) • Culturally Relevant Anti-bias Strategies • Disability, Education and the Arts (EDPSYCH) • Multi-ethnic Curriculum and Instruction (EDC&I) • Educating Native-American Youth • Diversity in Education • African American family • Cultural Awareness • Ethnic Minority Family • Ethics – relevant to staff working with children (Up to two college credits)
Health, Safety and Nutrition	<ul style="list-style-type: none"> • Knowledge of regulations • Environmental safety • Responding to health needs of children • Nutrition 	<ul style="list-style-type: none"> • Child Abuse and Neglect (EDUC, ECE, PSYC) • Health, Safety and Nutrition • Health and Children • Nutrition (Up to two college credits)
Interactions	<ul style="list-style-type: none"> • Providing individual guidance • Enhancing group experiences 	<p>ECE focused—birth to third grade:</p> <ul style="list-style-type: none"> • Guidance and Relationships • Child Guidance • Interventions for Classroom Management • Behavior Management* • Educating Children with Diverse Backgrounds • Guiding Behavior (EDUC) • Practicum: Focus on Relationships • Intro to Communications • Public Speaking

**Indicates that this course aligns with Washington State’s Core Competencies for Early Care and Education Professionals, and Washington State’s Core Competencies for Child and Youth Development Professionals.*

COMPETENCY AREA	ECE FOCUS AREAS TOPICS MAY INCLUDE:	COURSEWORK EXAMPLES <i>This list contains common examples, but is not inclusive.</i>
Program Planning and Development	<ul style="list-style-type: none"> • Program planning and evaluation • Financial management - specific to ECE • Personnel management - specific to ECE 	<ul style="list-style-type: none"> • Business Math* • Grant Writing* • Practicum and direct teaching courses such as: <ul style="list-style-type: none"> – Family Child Care – Admin of ECE • Culturally Relevant Anti-bias Strategies • Cultural Awareness • Ethics – relevant to staff working with children (Up to two college credits)
Professional Development and Leadership	<ul style="list-style-type: none"> • Displaying professionalism in practice • Ongoing professional growth • Leadership and advocacy 	<ul style="list-style-type: none"> • Administration of Early Childhood Programs (ECE, EDUC, HD prefixes) • Learning and Teaching in our Changing World (EDPSYCH)* • Professionalism • Inequalities and Impacts on Educational Equity • Intercultural or Interpersonal Communication (COM) • Intro to ECE • Current Issues in ECE • Human Relations in the Workplace • ECE Staff Development • Admin of Early Learning • Ethics (up to two college credits)
Additional credit-bearing coursework that may meet a number of competencies		<p>ECE Classroom Experience—birth to third grade:</p> <ul style="list-style-type: none"> • Teaching Practicums • Classroom Experience • Supervised Teaching • Service Learning • Direct Teaching

**Indicates that this course aligns with Washington State’s Core Competencies for Early Care and Education Professionals, and Washington State’s Core Competencies for Child and Youth Development Professionals.*

For a complete description of Washington State’s Core Competencies for Early Care and Education Professionals, see our publication *Washington State Core Competencies for Early Care and Education (EPS_0023)* available online at www.dcyf.wa.gov/publications-library/EPS_0023.

DCYF does not discriminate and provides equal access to its programs and services for all persons without regard to race, color, gender, religion, creed, marital status, national origin, sexual orientation, age, veteran’s status, or presence of any physical, sensory, or mental disability.

If you would like free copies of this publication in an alternative format or language, please contact DCYF Constituent Relations at 1-800-723-4831 or email communications@dcyf.wa.gov.