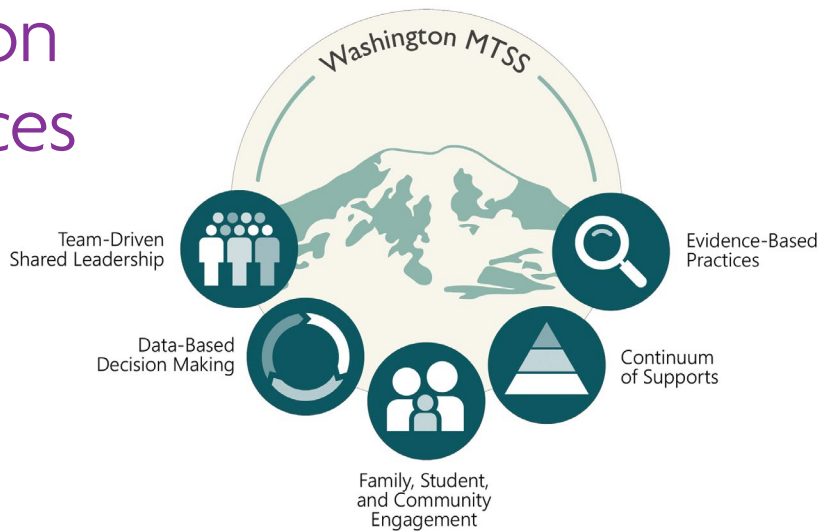


Juvenile Rehabilitation (JR) Education Services

We strive to address the needs of every young person through the various programs available. These programs include college education, vocational programs, skill development, and career readiness. These programs provide young people with the skills necessary to succeed in their future plans.



Education Multi-Tiered System of Supports (MTSS)

MTSS (Multi-tiered Systems of Support) is a three-tiered system that assesses young people's needs with interventions identified through data. This framework aims to support a positive learning environment for all young people.

Many young people in our care require individualized support to achieve educational success. Our role is to provide that support so that they have the necessary tools when planning their futures or further education. MTSS supports this through a three-tiered approach.

Tier 1: Research-Based Core Instruction

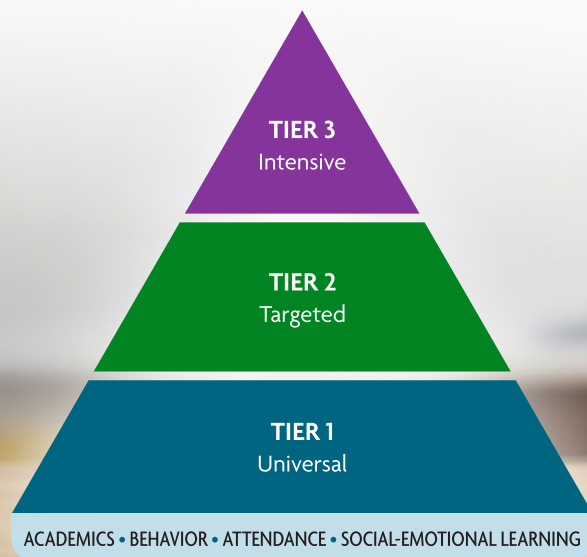
Instruction and programming support are provided to every young person across our system, regardless of location.

Tier 2: Targeted Intervention

Provide interventions in a group setting that include a short-term Success Plan to help teach replacement behavior or extinguish problem behavior.

Tier 3: Intensive Intervention

Provide individualized therapy, treatment, and accommodations to a young person.



Vocational and Education Programs

Educational and vocational programs are critical in equipping students with the necessary knowledge, skills, and training to succeed in their desired career paths. DCYF Juvenile Rehabilitation, in partnership with contractors, provides opportunities for students to access educational pathways and obtain postsecondary or vocational credentials. These programs help students develop personal, academic, and professional growth and enhance their ability to contribute effectively to their desired fields.

Programs:

- Intro to the Trades
- Construction Pre-Apprenticeship
- Manufacturing Academy
- Environmental Literacy and Job Training
- Hair Design
- Personal Fitness Training
- Direct-Transfer Associate Degrees
- Bachelor of Applied Science in Applied Management (BAS-AM)

Enrollment and Graduations

Green Hill School K-12 enrollment as of June 2024: **167 students**

Echo Glen Children Center K-12 enrollment as of June 2024: **97 students**

Earned college degrees in the 2024 school year: **29 students**



DCYF does not discriminate and provides equal access to its programs and services for all persons without regard to race, color, gender, religion, creed, marital status, national origin, citizenship or immigration status, age, sexual orientation or gender identity, veteran or military status, status as a breastfeeding mother, and the presence of any physical, sensory, or mental disability or use of a dog guide or service animal. If you would like free copies of this publication in an alternative format or language, please contact DCYF Constituent Relations at 1-800-723-4831 or email communications@dcyf.wa.gov.

DCYF PUBLICATION JR_0086 (07-2024)